

Governance Statistics in the COVID-19 Era

The Praia Group on Governance Statistics

52nd United Nations Statistics Commission

Thursday, 23 February 2021



Where is data governance?

Analysis of social media platforms, 9-15 July (WHO) excluding “Covid-19”, “Coronavirus”, and “Virus”

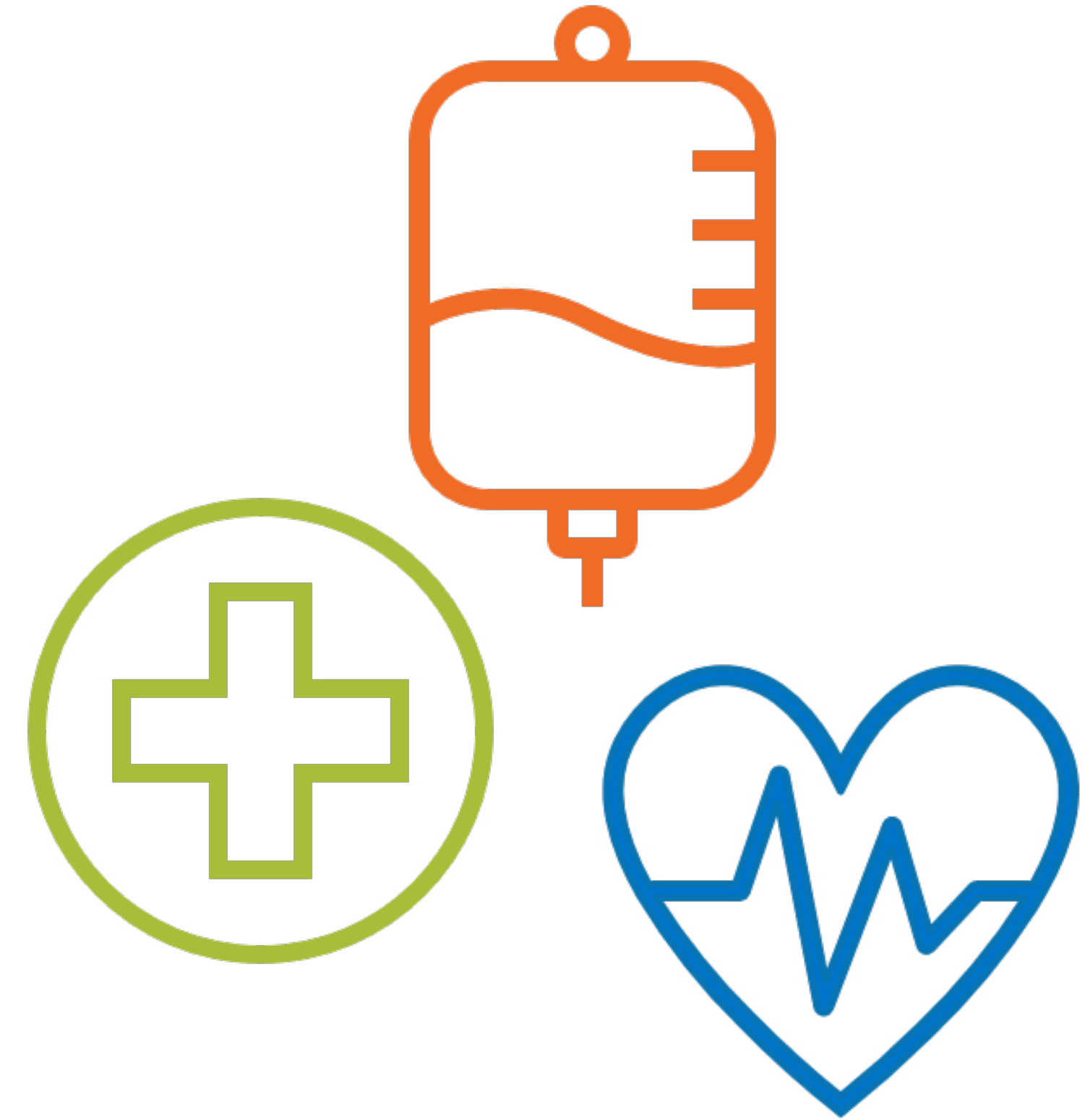


And issues of *governance*...?



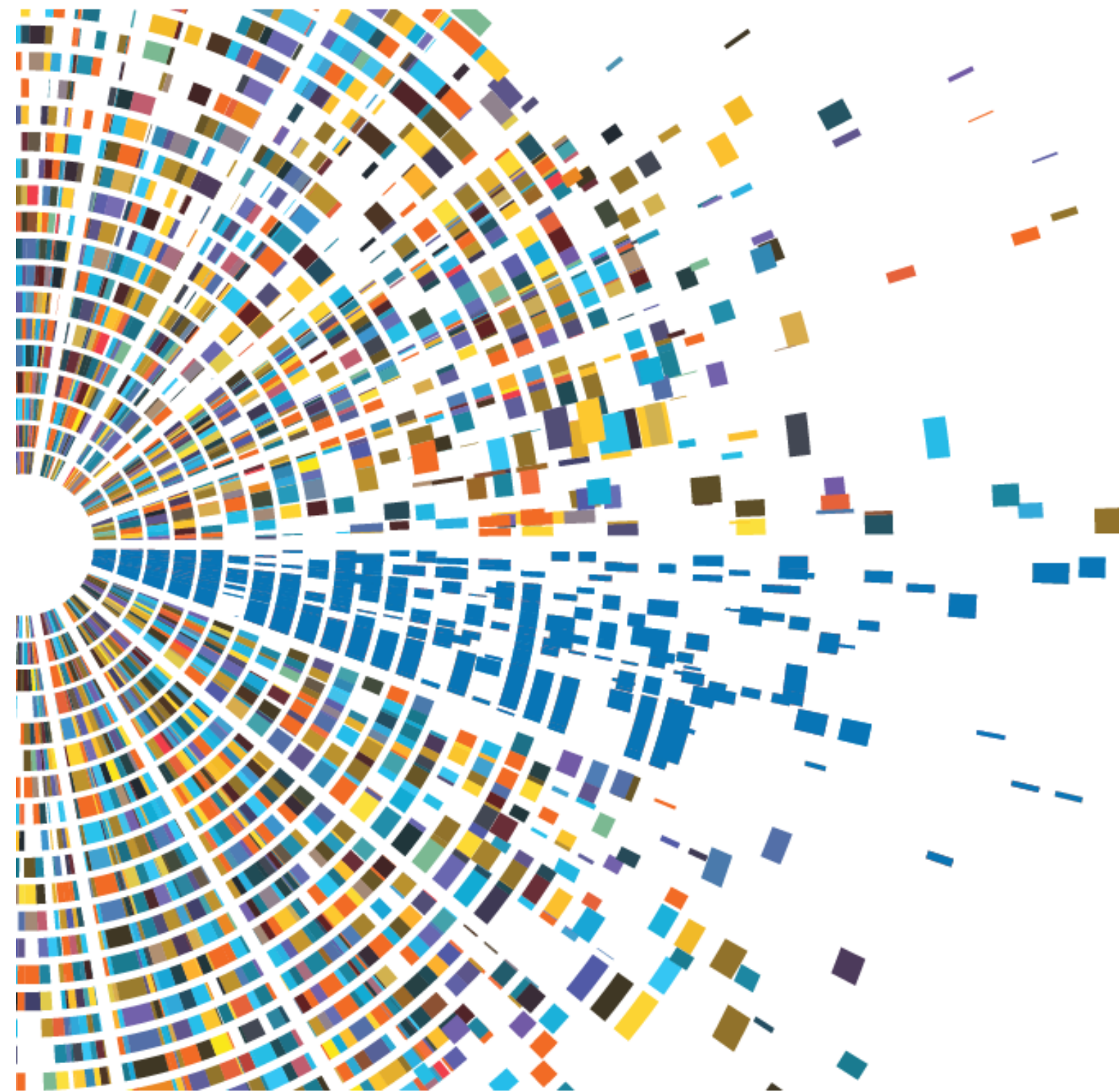
Major governance challenges

- Is testing and medical treatment for COVID-19 accessible for everyone **without discrimination**?
- What are the most common **justice problems** created or exacerbated by the pandemic?
- Are patients paying **bribes** to receive medical care before those unable to pay?
- Do people trust the **police** to keep the area where they live safe during lock-down measures?



Existing guidance on governance statistics

HANDBOOK ON GOVERNANCE STATISTICS



- Published by Praia Group in March 2020
- Good practices and recommended indicators for measuring 8 dimensions of governance
- COVID-19 raised new questions:
 - 1) What is most essential to measure during COVID-19?
 - 2) What can be realistically measured during COVID-19, keeping in mind mobility restrictions and financial constraints faced by NSOs?

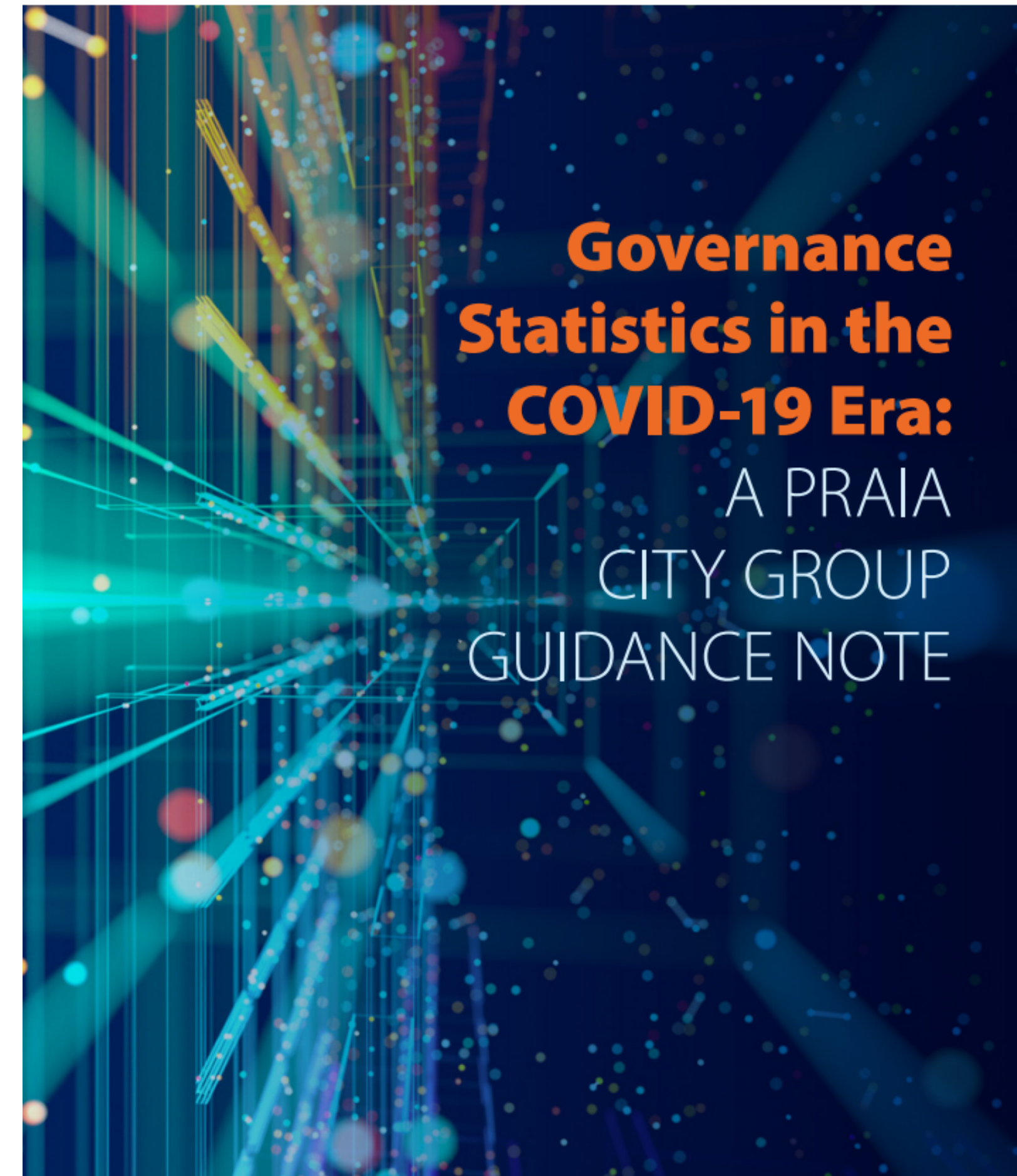
The Guide: Who is it for?

Governance **data producers**

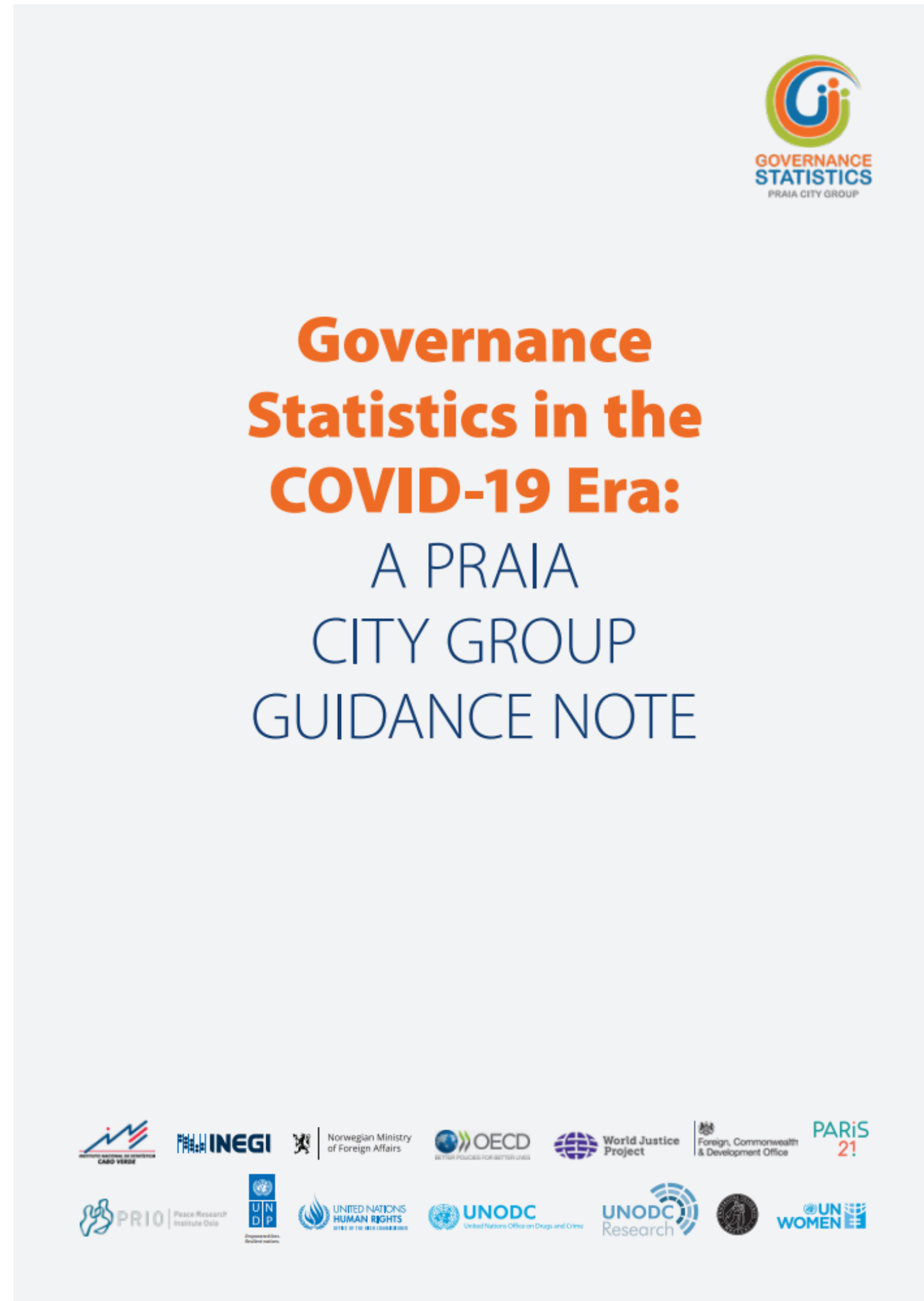
- National Statistical Offices (NSOs)
- Govt ministries and agencies
- Civil society, research orgs, etc.

Governance **data users**

- National COVID-19 Taskforce
- Policymakers
- Media
- Parliament
- Civil society
- Etc.

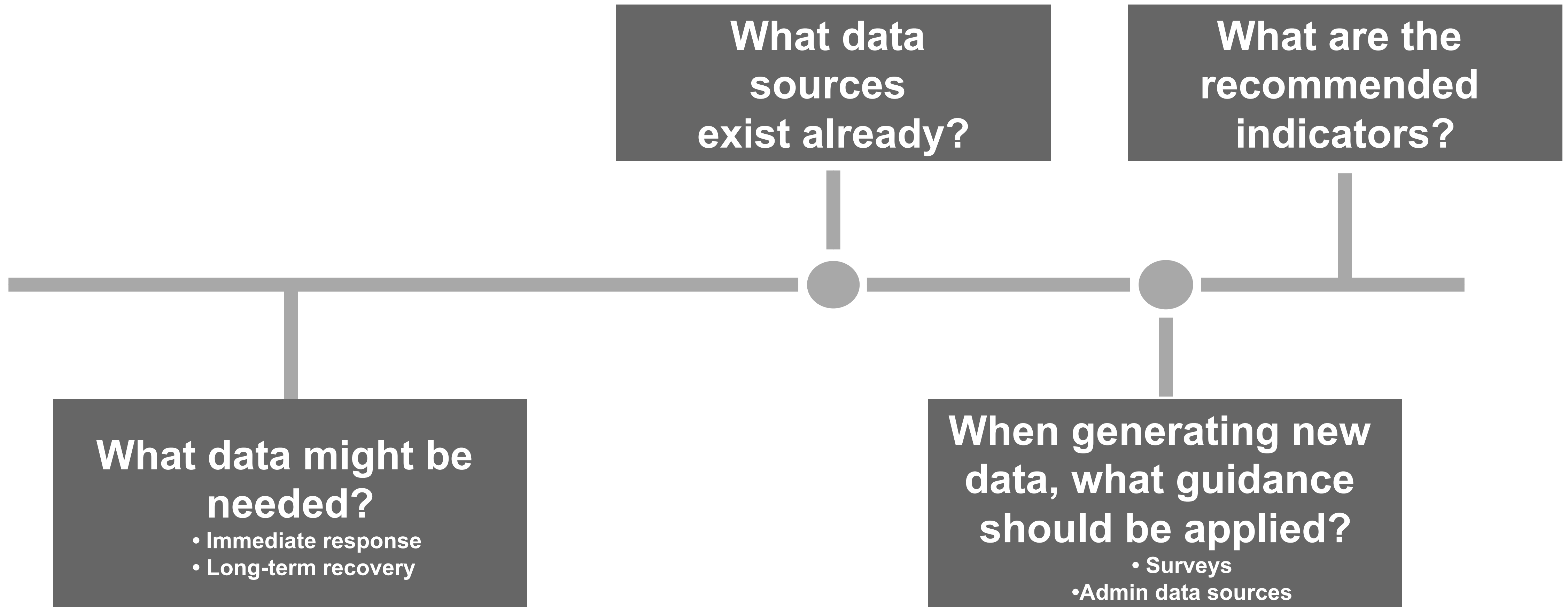


8 Thematic Briefs



1. **Non- discrimination & equality**
2. **Participation**
3. **Openness**
4. **Justice**
5. **Responsiveness**
6. **Corruption**
7. **Trust**
8. **Safety and security**

Organization of each thematic brief



Cross-cutting issues of relevance to the COVID-19 context

- Combining **objective** and **subjective data** for better insights
- Mining existing **official** and **non-official** sources before collecting new data
- Harnessing the full potential of **administrative records**
- Integrating a **short governance module in larger surveys** for regular monitoring
- Specific issues to keep in mind when conducting **governance surveys remotely**
- Partnering with **non-official data producers**
- Going beyond data production: NSOs' role in quality assurance, partnership-building and communication



How can NSOs use this guide: **Engage COVID-19 Taskforces & Institutions on the Frontline**

Help them identify the data they need:

- Immediate response
- Longer-term recovery



Use **key policy questions** on top of each brief as starting point for discussion



How can NSOs use this guide: **Build a COVID-19 Governance Dashboard**

Policymakers need more than
access to datasets:

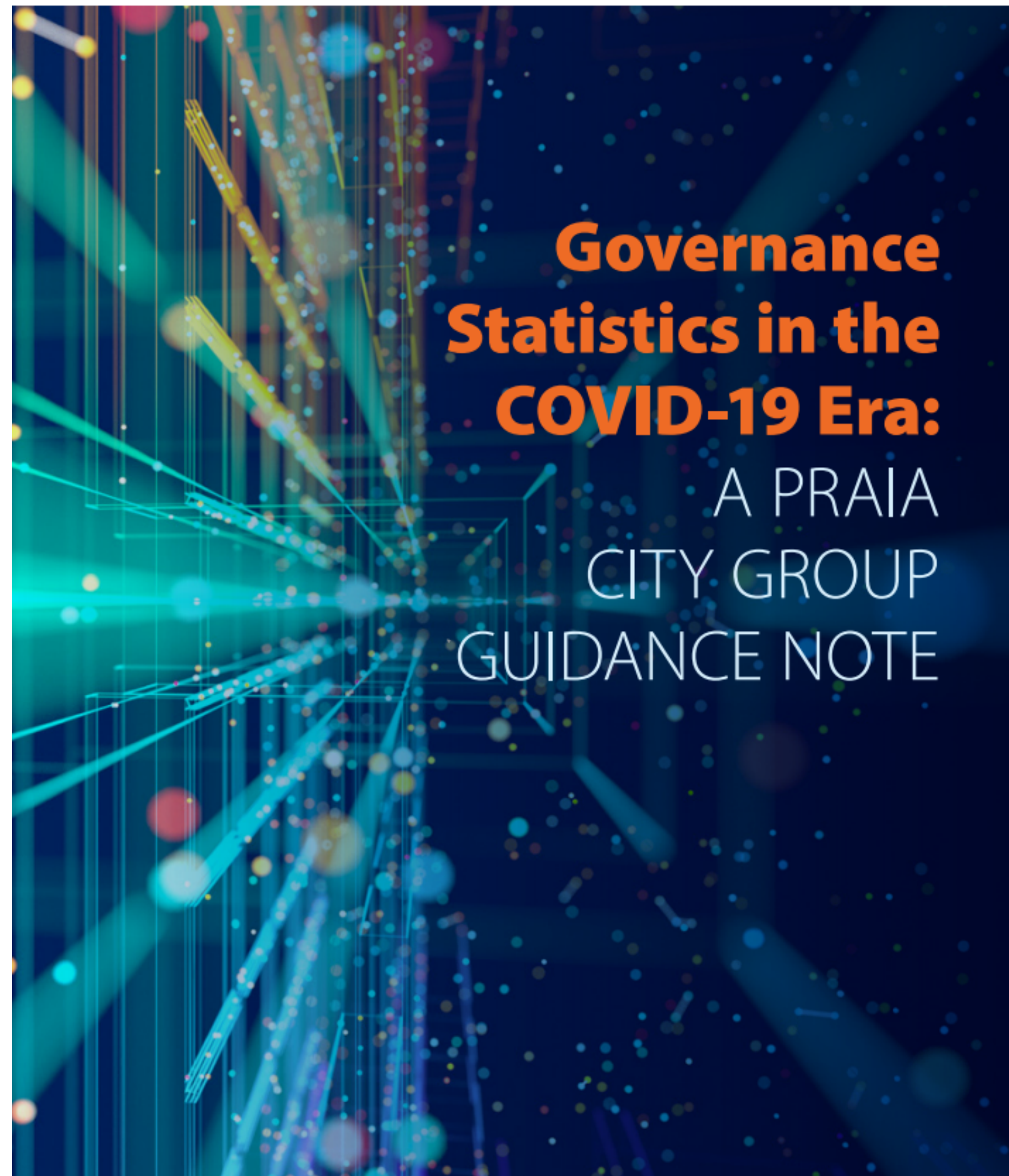
**they need decision-making
tools**



Use **recommended
indicators** in last
section of each brief



3 Take-Away's



- Governance statistics so far, largely **absent** from policy discussions **but critical** for peaceful and sustainable recovery.
- There are **simple & affordable ways** for NSOs to make basic data available despite constraints.
- The Praia Group is available for technical advice and wants to build a compendium of national experience: **Please contact us!**

group.praia@gmail.com



Governance statistics in the context of the COVID-19 pandemic: INEGI's experience

52nd United Nations Statistics Commission
Thursday, 23 February 2021

INEGI's institutional efforts to measure the impact of COVID-19

The National Institute of Statistics and Geography (INEGI) has made available to the general public **special tools** and **statistical programs** for analyzing the **COVID-19** pandemic effects in Mexico. We can observe these efforts from the following perspectives:

1. **Statistical programs for impact measurement**
2. **Interactive dashboards**

1. Statistical programs for impact measurement

Compilation of Information on Public Cemeteries in the Metropolitan Areas of Mexico

- i. **General objective:** To obtain and generate information about the maintenance, capacity and administration of municipal cemeteries and the management of mortal remains from **January to June 2020**.
- ii. **Analysis unit:** Cemetery whose administration belongs to the public sector (municipal level).
- iii. **Geographical coverage:** National (urban).
- iv. **Collection period:** June 29 to August 07, 2020.



National Survey on Urban Public Safety (ENSU)



Noteworthy information related to COVID-19: indicators on domestic violence, type of aggressor, month of occurrence and type of violence.

SDG 16:

Change of habits due to **fear of walking around the area they live at night**
(Indicator 16.1.4)



Collection period

- ✓ September 1st to 15th, 2020
- ✓ December 1st to 15th, 2020

Sample size

- ✓ 25,500 households

Other relevant indicators

- ✓ Institutional trust: police, armed forces
- ✓ Victimization
- ✓ Perception of public safety

National Survey on Civic Culture (ENCUCI)

- **Target Population:** 15 years and older.
- **Noteworthy information on COVID-19:** "Having or having had COVID" was integrated as a possible cause of discrimination, both perceived against third parties and experienced by respondents.



SDG 16:

- **Indicator 16.7.2:** Proportion of population who believe decision-making is inclusive and responsive.
 - ✓ **External efficacy:** "In Mexico, for decision-making, the government considers the opinions of people like me".
 - ✓ **Internal efficacy:** "I consider that I have knowledge and skills to participate in political activities".
- **Indicator 16.b.1:** Proportion of population reporting having personally felt discriminated against or harassed in the previous 12 months on the basis of a ground of discrimination prohibited under international human rights law.

Other relevant indicators

- ✓ Institutional trust
- ✓ Interpersonal trust

Collection period

- ✓ August 17th to September 18th, 2020

Sample size

- ✓ 25,113 households

National Survey on Regulatory Quality and Governmental Impact on Enterprises (ENCRIGE)



SDG 16:

Indicator 16.5.2: Proportion of businesses that had at least one contact with a public official and that paid a bribe to a public official, or were asked for a bribe by those public officials during the previous 12 months

Other relevant indicators

- ✓ Proportion of businesses satisfied with their last experience of public services
- ✓ Regulatory quality

Collection period

- ✓ November 3th to December 15th, 2020

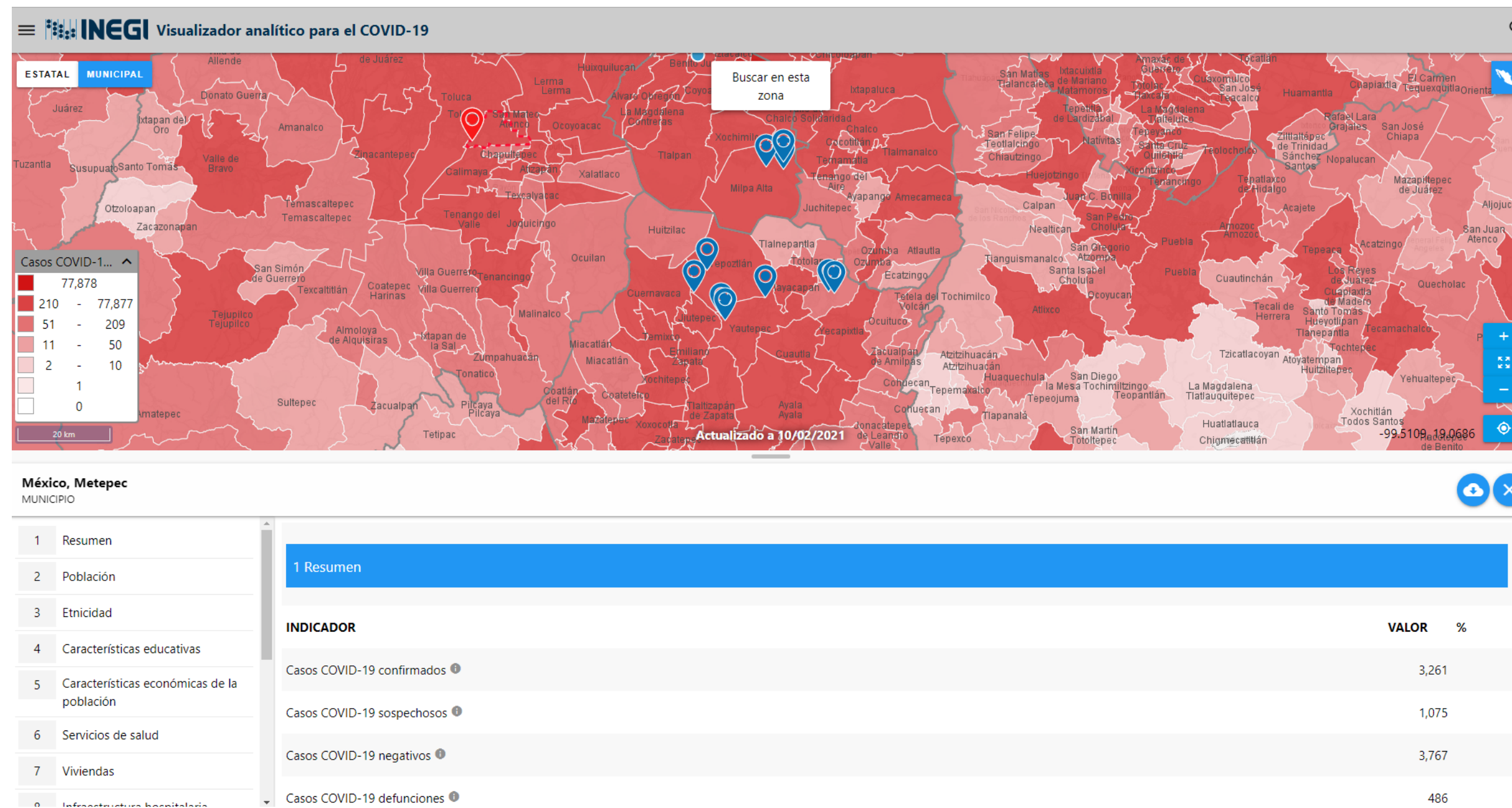
Sample size

- ✓ 34,919 enterprises

2. Interactive dashboards

Interactive dashboards

Based on its current geo-data visualization platforms, INEGI created additional layers of information which allows interactive dashboards to visualize detailed data on the maps, regarding the progress and impact of the Covid-19 pandemic, correlated with socio-demographic and economic statistics of each environment.



**Analytical viewer for
COVID-19**

**National Statistical
Directory of
Economic Units
(DENUE)**

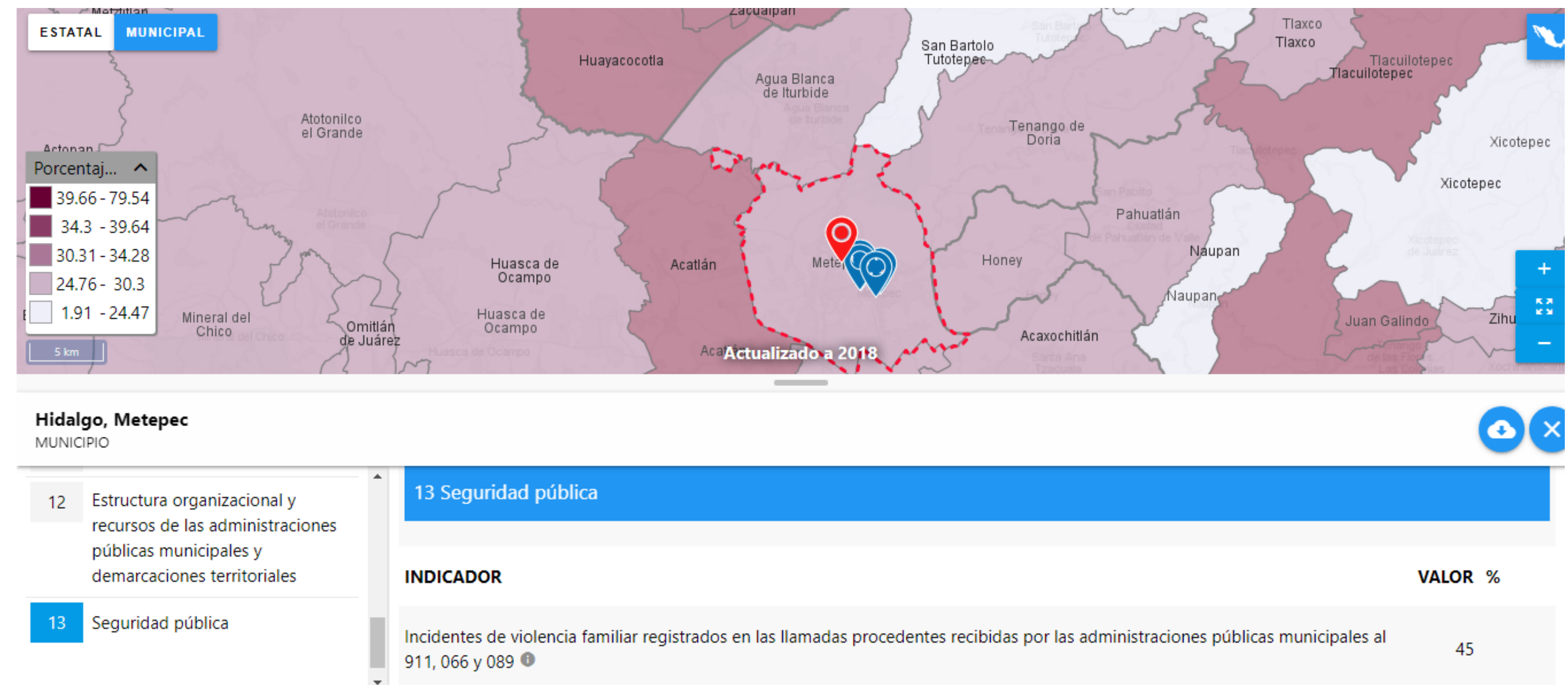
Governance indicators included in the dashboard

Organizational structure and resources of the municipal public administrations

- ✓ Percentage of the personnel affiliated to a social security institution (IMSS, ISSSTE)
- ✓ Percentage of budget spent on health
- ✓ Percentage of budget spent on social security
- ✓ Real estate to support the health function
- ✓ Others

Public safety

- ✓ Incidents of domestic violence registered in calls received by the municipal public administrations



Conociendo México

01 800 111 46 34

www.inegi.org.mx

atencion.usuarios@inegi.org.mx



INEGI Informa